

Fedora Core 3

What's new with Test 2
(really also, RHEL4)
and the *community*

FC3 – Suggested goals

- SELinux – targeted, strict
- GNOME 2.8 & KDE 3.3
- IIMF; Indic language support
 - system-switch-im
- Evolution 2.0
- Remote desktop support
- GCC 3.4

Impacts, schedule

- Fedora Core 3 test 2 should be out come September 13th 2004
 - release candidate is already out
- Fedora Core 1 updates will **cease** then
- It's time to move to Fedora Legacy
 - Participants are required
 - <http://www.fedoralegacy.org/>
 - <http://bugzilla.fedora.us/> is for FL-related bugs

New stuff!

- bzflag – new game
- Aiksaurus – thesaurus
- Pyrex – for Python extensions/modules
- ecj – Eclipse!
(compiler only...)
- crash & valgrind
- HelixPlayer
- Firefox
- howl, libtheora, vino, libgnomedb, gnome-keyring-manager, gnome-volume-manager, NetworkManager, evolution-connector, evolution-webcal, dasher, gnome-nettool
- hal

SELinux

- Default option - “Active”
- Read up on it now
 - <http://people.redhat.com/kwade/fedora-docs/selinux-faq-en/>
 - <http://www.lurking-grue.org/GettingStartedWithNewSELinuxHOWTO.pdf>
- selinux-policy-targeted (default)
 - works, been tested a lot
- selinux-policy-strict
 - good to have some SELinux knowledge

Media Handling

- Hardware Abstraction Layer (HAL), with DBUS (messaging system) implemented now
- No more buggy FAM – gamin replaces it
 - magicdev leaves too
- /media and /srv exist now
 - HAL uses /media, rather than /mnt
 - This is more FHS like

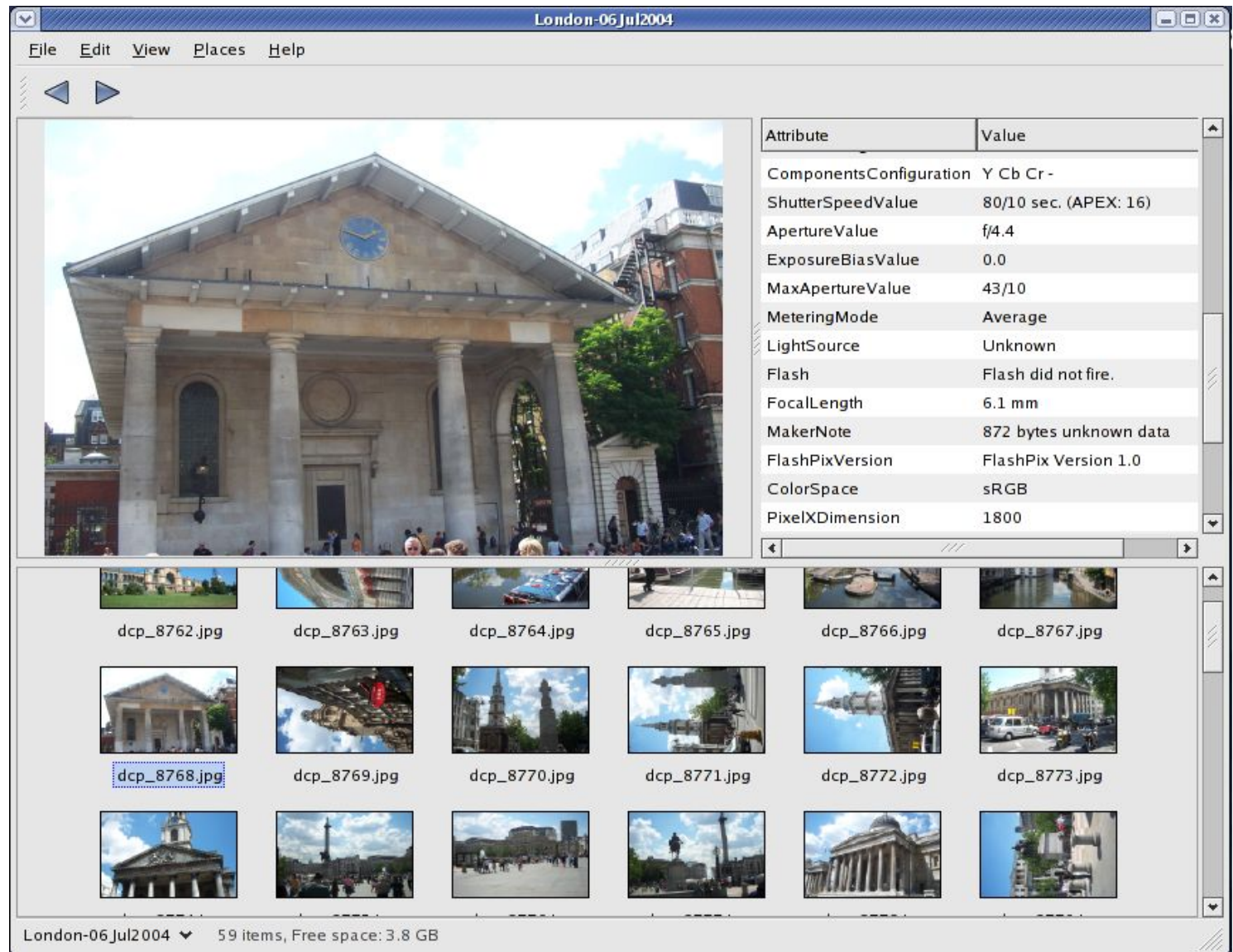
gnome-volume-manager



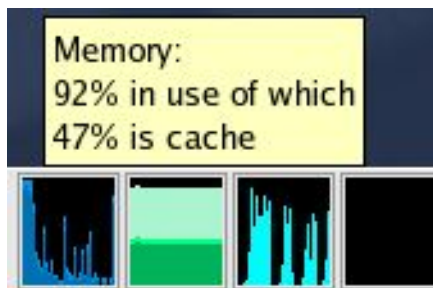
- gnome-volume-properties dialog
- Along with HAL, udev, gnome-volume-manager, and gamin (which are abstracted from the user), media handling is a breeze

GNOME: Nautilus

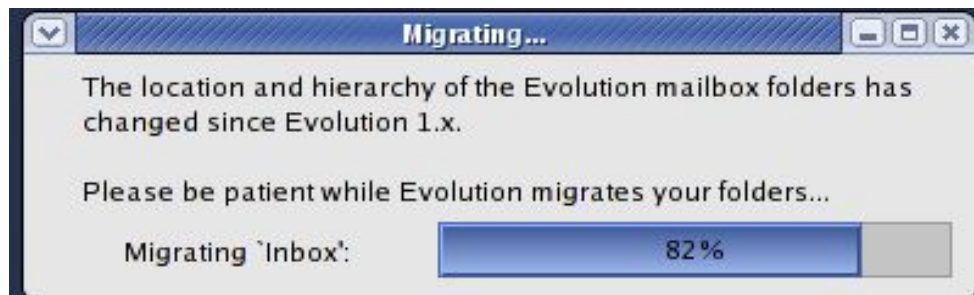
View -> As Image Collection has since been removed from the Eye-of-GNOME (eog) since 2.7.x so this view no longer applies.



GNOME...



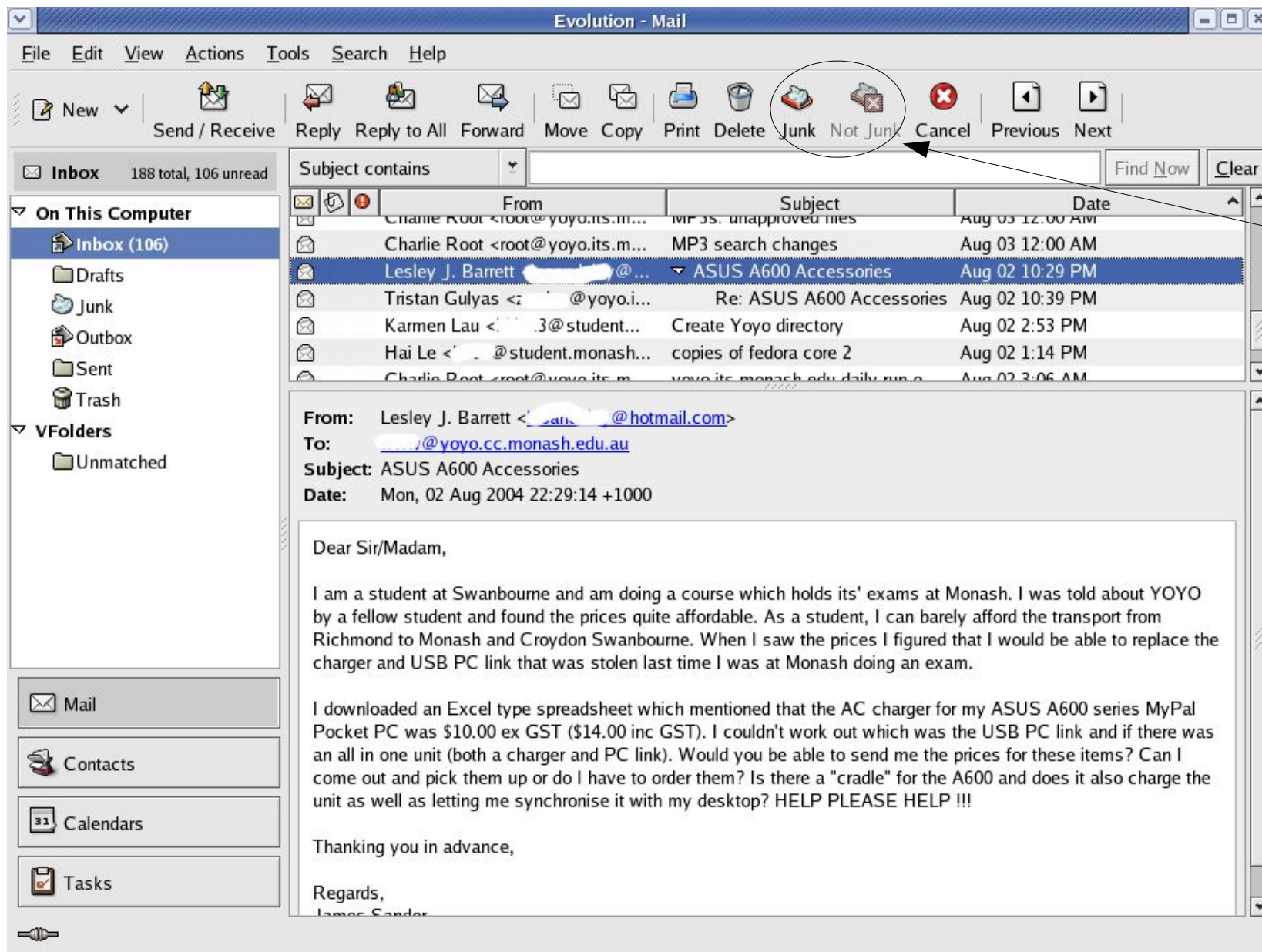
System Monitor now has more information for you (especially useful in explaining why it seems memory usage is always high!)



Evolution gets migrated! The migration is non-destructive, and your old data will not get deleted (unless you specifically mention)

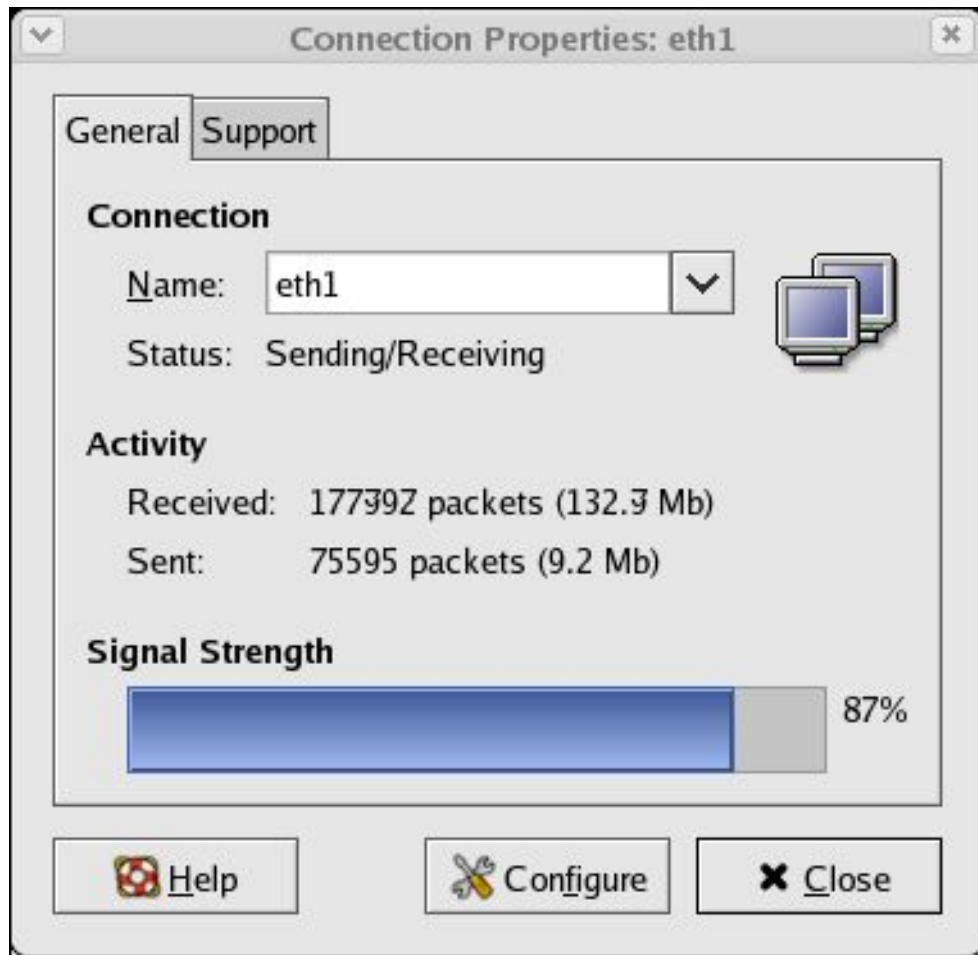


Evolution 2

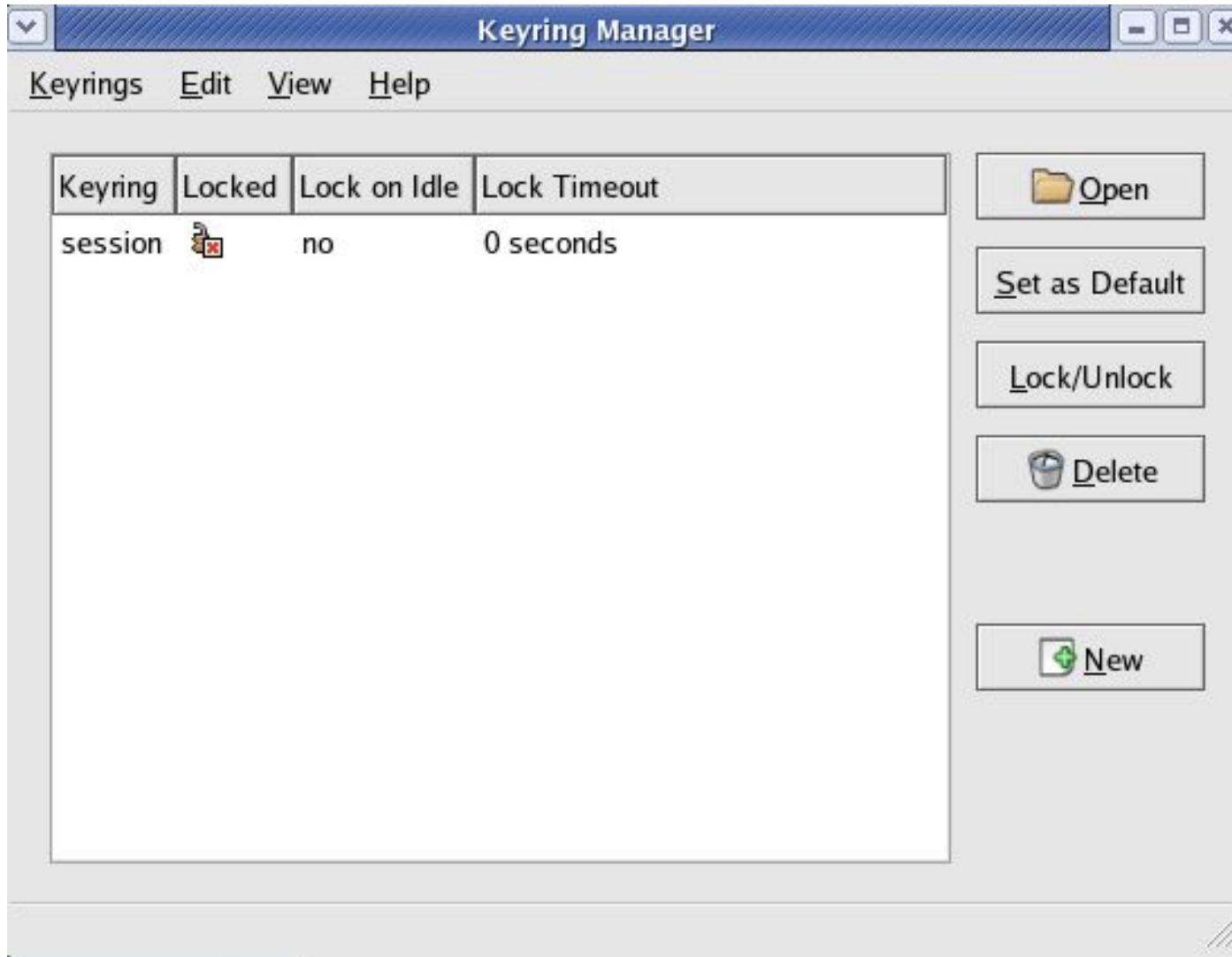


Built-in junk mail checking by calling upon SpamAssassin.

NetworkManager



The Keyring Manager



Simplest keyring manager, that came as a result of the gnome-love project.

Remote Desktops (vino)



You can now share your desktop over the Internet, and allow others to “control” your desktop.

Vino is the name provided for the GNOME VNC server.

Anaconda, now with LVM

Anaconda, the installer now sports LVM configurations when using the AutoPartition option.

Logical Volume Management (LVM) is at version 2, and uses the device mapper kernel drivers. Its useful for resizing & moving around at will, and FC3 is to sport ext3fs resizing at will*.

* - the .541 kernel does, but has been known to cause data corruption, so Rawhide has rolled back to .540.

The screenshot shows the 'Disk Setup' window in the Fedora Core installer. The window title is 'Fedora CORE'. The main heading is 'Disk Setup' with the instruction: 'Choose where you would like Fedora Core to be installed.' Below this, there are three paragraphs of help text: one about manual partitioning tools, one about automatic partitioning, and one about manual partitioning. A table displays the current disk configuration for drive /dev/hda (11507 MB). The table has columns for Device, Mount Point/RAID/Volume, Type, Format, Size (MB), Start, and End. It shows LVM Volume Groups (VolGroup00) with members LogVol01 (swap, 512 MB) and LogVol00 (ext3, 10848 MB). It also shows Hard Drives: /dev/hda1 (boot, ext3, 102 MB) and /dev/hda2 (VolGroup00, LVM PV, 11406 MB). At the bottom, there are buttons for 'Hide Help', 'Release Notes', 'Back', and 'Next', and a checkbox for 'Hide RAID device/LVM Volume Group members'.

Disk Setup

Choose where you would like Fedora Core to be installed.

If you do not know how to partition your system or if you need help with using the manual partitioning tools, refer to the product documentation.

If you used automatic partitioning, you can either accept the current partition settings (click **Next**), or modify the setup using the manual partitioning tool.

If you are manually partitioning your system, you can see your current hard drive(s) and partitions displayed below. Use the partitioning tool to add, edit,

Drive /dev/hda (11507 MB) (Model: IBM-DARA-212000)

hda2
11405 MB

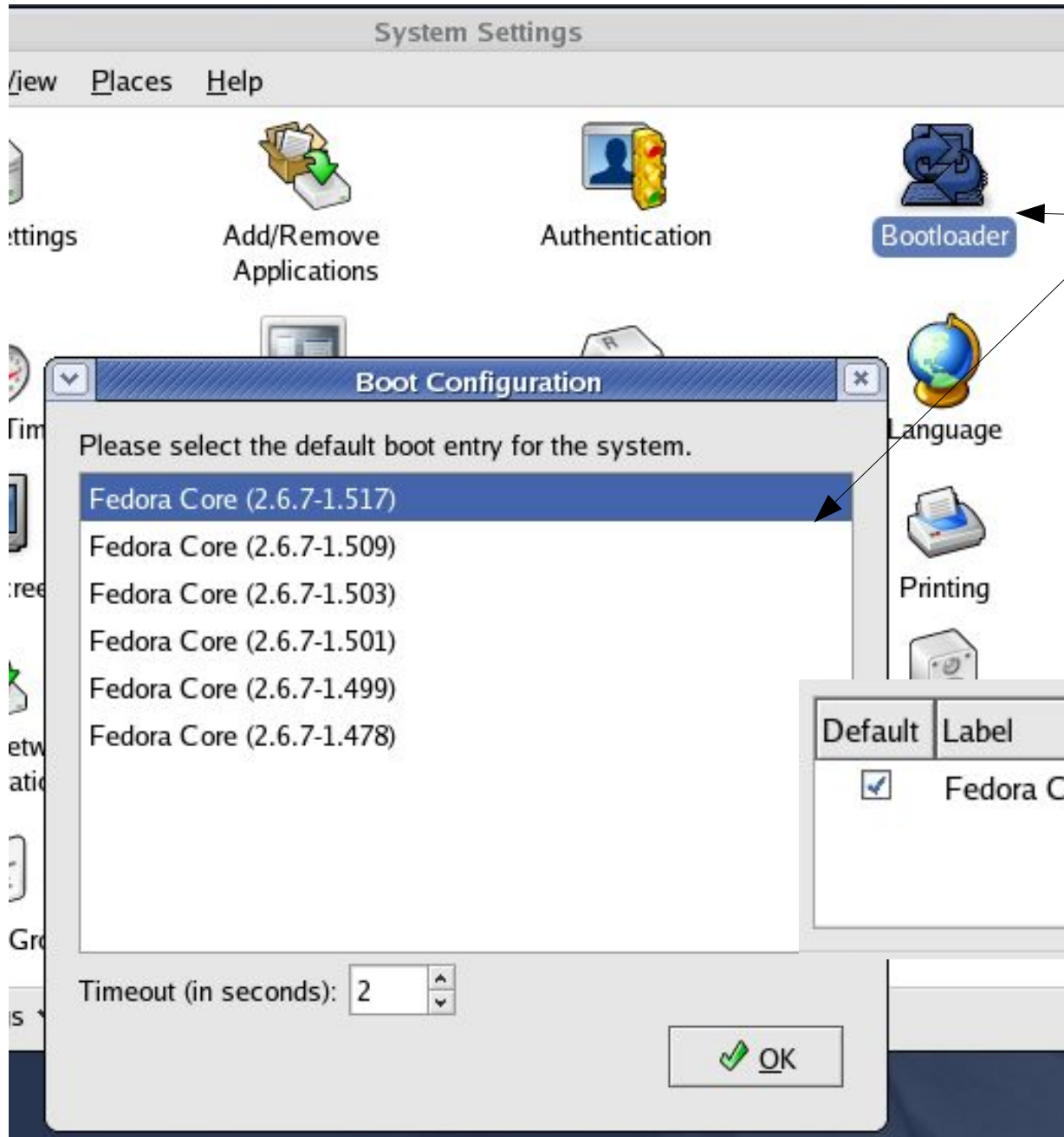
New Edit Delete Reset RAID LVM

Device	Mount Point/ RAID/Volume	Type	Format	Size (MB)	Start	End
LVM Volume Groups						
VolGroup00						
LogVol01		swap	✓	512		
LogVol00	/	ext3	✓	10848		
Hard Drives						
/dev/hda						
/dev/hda1	/boot	ext3	✓	102	1	13
/dev/hda2	VolGroup00	LVM PV	✓	11406	14	1467

Hide RAID device/LVM Volume Group members

Hide Help Release Notes Back Next

Bootloaders



system-config-bootloader: new tool to manage which kernel gets booted by default.

GRUB now sports a new splashscreen – so by default it just boots the selected boot configuration, rather than showing the end users all possible options.

GRUB handles booting LVM volumes without issues.

Removed package overview

- gqview - gThumb
- licq – GAIM is more widely used
- tomcat – JSP reference implementation
- Chromium (game)

The Community

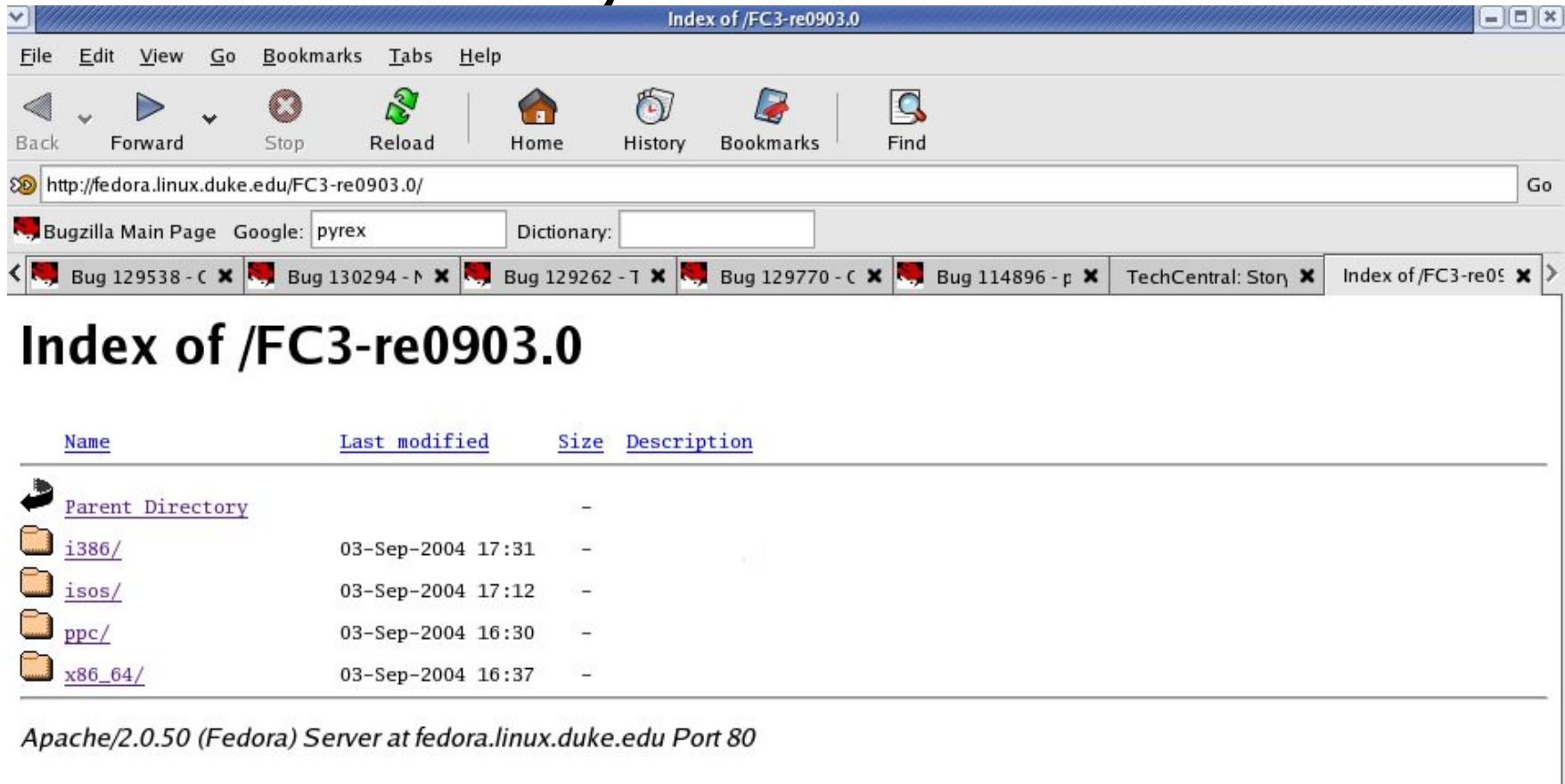
- Is alive and kicking
 - 5,800 on fedora-list, 1,565 on fedora-devel-list, 2,330 on fedora-test-list
 - FedoraForum has over 3,500 members
 - Fedora News Updates gets over 20,000 reads whenever its released
 - IRC channels are usually packed
 - and #fedora is usually *very* noisy

Community II

- <http://fedoraproject.org/>
 - The future fedora.redhat.com
 - currently has the Fedora People
 - <http://fedoraproject.org/people/>
 - Wiki
 - <http://fedoraproject.org/wiki/>
 - CMS to go into place soon
- Extras will get *properly* defined soon

I wanna try it!

- Release candidates for FC3 test 2 have made their way online



- <http://fedoraproject.org/FC3-re0903.0/>

How to help (test releases)

- Get on fedora-test-list@redhat.com
 - and read the archives, if required
- Bugzilla is your friend!
 - <http://bugzilla.redhat.com/>
- Watch the FC3 Trackers:
 - #123268 (FC3Target – FC3 target tracker)
 - #130887 (FC3Blocker – FC3 suck-free)
 - #131589 (YellowPad – desktop suck-free)

How to help II

- Perform Everything installs – they're more fun
- If you have several testing machines:
 - mirror Rawhide onto a box
 - burn boot.iso and install via NFS/HTTP/FTP
- Buy a CDRW – it'll save you money!

Some strange bug reports

Opened by **Mike MacCana** (mikem@cyber.com.au) on 2004-07-07 06:30

Description of problem:

A horse-birth issue has recently been discovered in StarOffice. Being based on the same code may cause this issue to be apparent in OOo too. A further description of this issue URL is provided above (you might wanna install totem or mplayer first).

#127369

Version-Release number of selected component (if applicable):

1.1.1

How reproducible:

Always

Steps to Reproduce:

- 1.Be in the Japanese 7/11
- 2.Realize how cheap OpenOffice is

Actual results:

User gives birth to horse

Expected results:

Customer should not give birth to horse

Additional Comment #1 From **Warren Togami** (wogami@redhat.com) on 2004-09-06 04:52

WONTFIX

This is obviously a feature, not a bug.

Opened by **Stewart Smith (stewart@flamingspork.com)** on 2004-08-10 10:34

#129572

Description of problem:

For many years now, many[1] a girlfriend has been captivated by the vast array of games that Linux provides. All the way from MkLinux DR3 with a version of KDE pre-1.0 up to FC3test1, games have allowed me to install Linux on people's machines.

Often, after letting them use my linux box (and they found the "Games" menu), it took me many hours to pry them away from the machine again. Usually this is the other way around.

Now, I can get some peace and quiet while hacking - just install games on another machine!

My current lack of girlfriend has nothing to do with them spending too much time with games and not enough with me. Really.

How reproducible:

Majority of past gf's.

Steps to Reproduce:

1. Get Girlfriend
2. Show her "Games" menu
3. Get time to hack (or not, depending on number of available machines).
4. Take over the world (err... i mean, install linux on her box)

Actual results:

She now see's the point of this "linux" thing you spend so much time with.

Expected results:

Her dancing away to Frozen Bubble Music.

Additional info:

[1] Not implying that I get around... there's just been a few... really!

Thank You!

Colin Charles
byte@bytebot.net
<http://www.bytebot.net/>